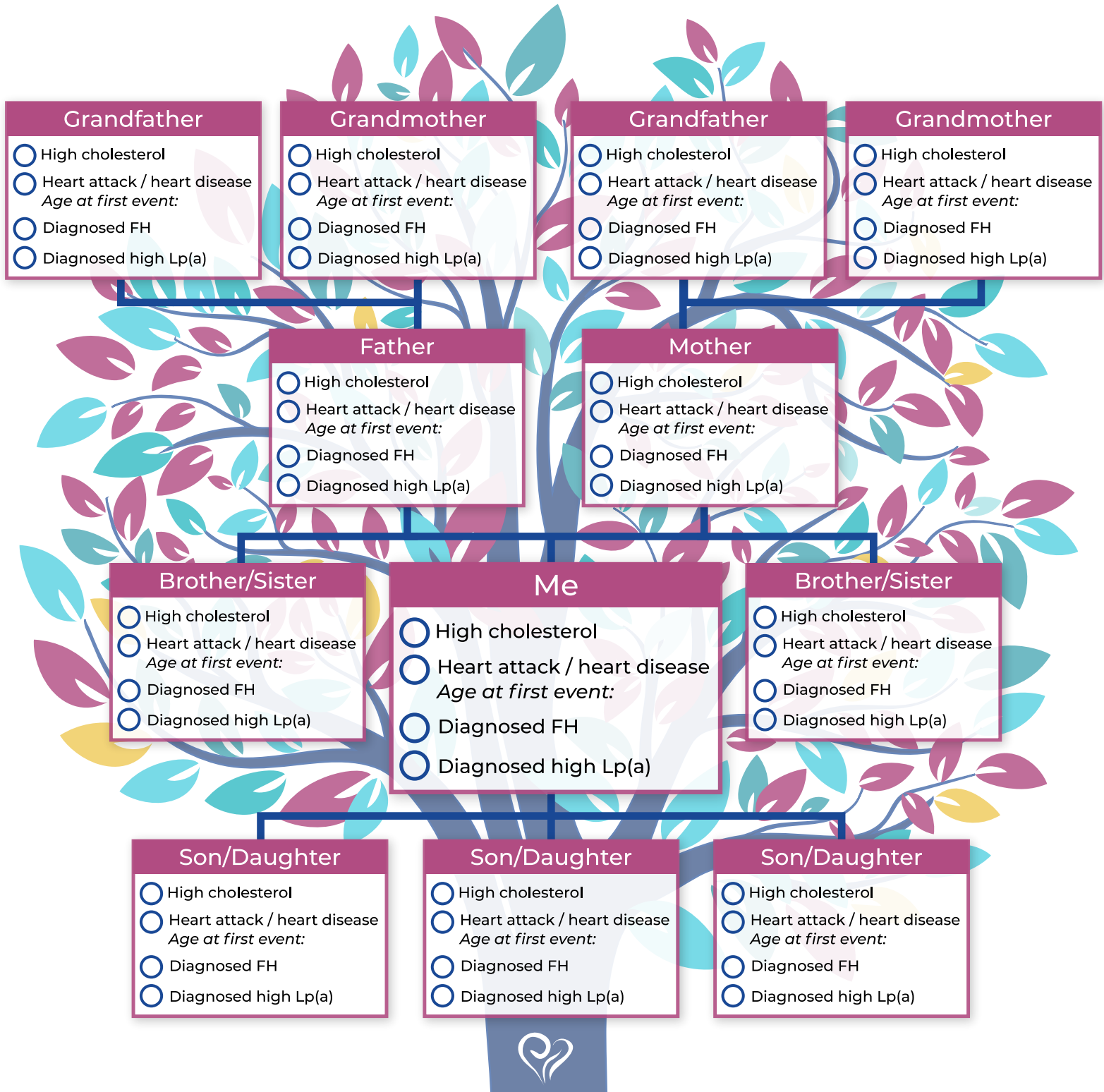


What's in my Family Tree?



Does heart disease run in your family? What about early heart attacks or strokes? Does anyone have high cholesterol? It could be an inherited condition, such as, familial hypercholesterolemia (FH) or elevated lipoprotein(a), also known as Lp(a). It's time to know about your family's heart health history. Fill out the tree above to get your family on the right path to healthy hearts.